

**SONY**

## Car Stereo Service Bulletin

Sony Service Company : Technical Services  
A Division of Sony Corporation of America  
Sony Drive, Park Ridge, New Jersey 07656

**Model:** CDX-5040/5080/7540/7580

**No. 219**

**Subject:** Service Manual Addition: Service Mode Instructions.

**Date:** October 31, 1991

**Symptom:**

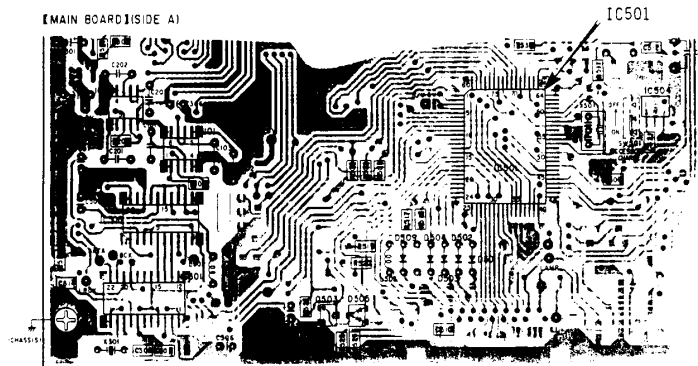
(\*\*) The instructions for entering and exiting the service mode were omitted from the Service Manuals.

**Solution:** Please add the following instructions to your Service Manuals:

"The method of entering the service mode is dependent upon the firmware version of IC501 on the main board. Refer to the chart below to determine which method is applicable to each unit:

| IC501 FIRMWARE VERSION | METHOD FOR ENTERING SERVICE MODE   |
|------------------------|--|
| μPD75516GF-107         | WHILE SIMULTANEOUSLY PRESSING THE <i>MUTE</i> AND <i>PRESET #1</i> BUTTONS, PRESS AND RELEASE THE <i>RESET</i> BUTTON. |
| μPD75516GF-160         | WHILE SIMULTANEOUSLY PRESSING THE <i>MUTE</i> AND <i>LOUD</i> BUTTONS, PRESS AND RELEASE THE <i>RESET</i> BUTTON.      |

"To cancel the service mode, press the *OFF* button, or the *RESET* button."



Reference: FPR-M2549

PRINTED IN U.S.A.  
CSA-141091-4

CSA-14 CD Player